



**Center for Education,
Engagement and
Evaluation**

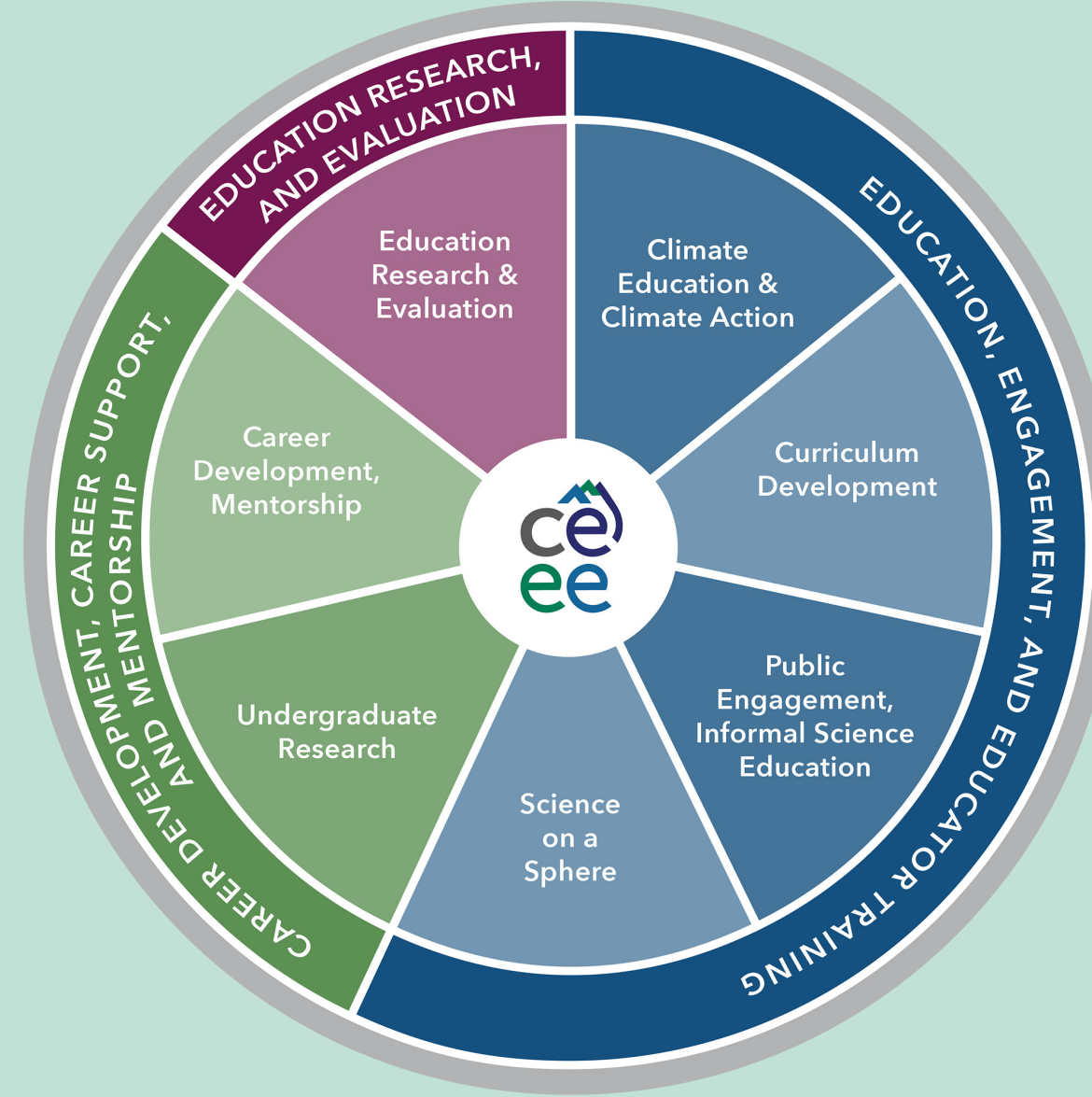


CIRES Center for Education, Engagement and Evaluation

We provide engagement opportunities for CIRES researchers. We support CIRES scientists to contribute to education, outreach, training, community engagement and much more.

What we do

- Bring science and scientists into classrooms & learning environments
- Provide professional development for educators and the public
- Develop high-quality educational materials
- Provide early-career opportunities
- Conduct education and outreach project evaluation and educational research



We enhance the broader impacts outcomes of your research. Contact us!

OUR MISSION

CEEE is a well-known and trusted partner for connecting CIRES science with educators, learners, and communities. We strive to make research data accessible, inspire environmental action, and empower curiosity and scientific engagement. We provide high-quality environmental science curriculum and informal learning experiences, as well as meaningful professional and career development opportunities. Our evaluation team measures the impact of programs and contributes to scholarship around best practices.

OUR TEAM (plus students & volunteers)



How CIRES Center for Education, Engagement and Evaluation Can Support You and Broaden the Impact of Your Science

WHAT WE DO

• Broaden Impact of your Science



NSF CAREER awards, Student engagement, Educational videos, Teacher workshops, Curriculum development, Data Puzzles, Immersive experiences (VR)

• Evaluation & Educational Research Services



Surveys, focus groups, needs assessments, usability studies, impact measures, webanalytics, network analysis

• Early Career Scientist Support



Research Experience for Undergraduates (RECCS) summer mentor opportunity, trainings and workshops, support for graduate fellowships, mentorship support, Polar Early Career Community Office, Field Safety Trainings

• Development Teaching Materials & Educator Workshops



Standard-aligned, engaging curriculum, translating of research data into learning materials (Datapuzzles™), Climate education resource clearinghouse (CLEANet.org), Massive Open Online Courses (MOOCs), Teacher trainings and workshops

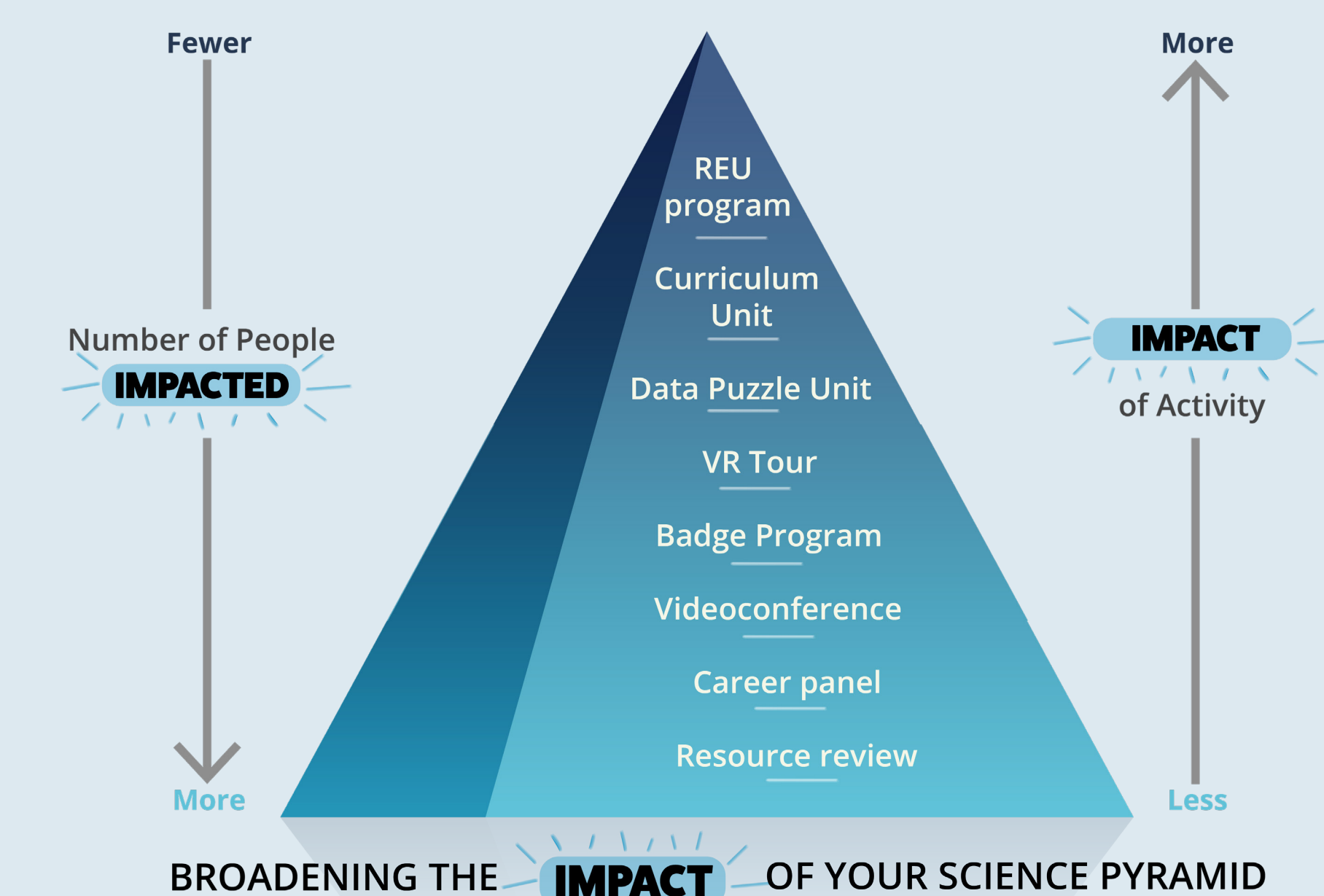
• Engagement & Outreach Opportunities



Community engagement through traveling exhibit, library take&make kits, speaker series, classroom connections, Science Show and Share

MENU OF ACTIVITIES TO BROADEN THE IMPACT OF YOUR SCIENCE

Looking for an effective and engaging Broader Impacts component for your next proposal? CEEE can help you draft and implement engaging broader impacts activities that align with your proposal. The pyramid shows suggestions of Broader Impact activities that can be customized to support your next proposal.



Learn More



WE ARE HERE TO HELP!

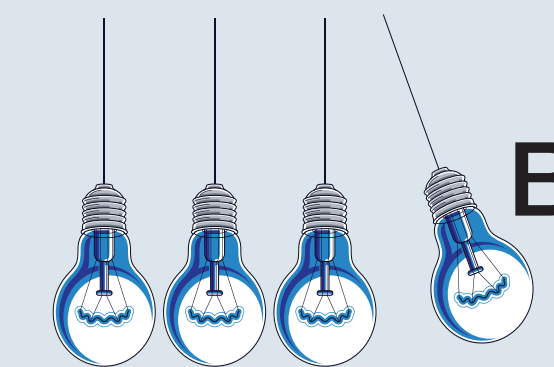
Describe your Science Proposal



Develop a competitive Outreach plan



Learn about ways to engage



Broaden the impact of your science

Ask us to help with:

- Proposals
- Postdoc Mentoring Plans
- Grad Research Fellowship Proposals
- Presentations
- Needs Assessment, Community Building
- Evaluation
- Online Courses
- Webinars
- Digital Resources
- Videos
- Impact Assessment



CEEE News

Contact Us:
Director, Anne Gold: anne.u.gold@colorado.edu

<https://ceee.colorado.edu>



University of Colorado **Boulder**

