



Center for Education,  
Engagement and  
Evaluation



INSPIRING GIRLS  
EXPEDITIONS  
**GIRLS\* ON ROCK**

# Girls\* on Rock – Adventure in the Rockies

Chelsea Zaniboni, Melisa Diaz, Pacifica Sommers, and Anne Gold

## WHAT IS GOR?

Girls\* On Rock (GOR) is a FREE pre-college program consisting of a backcountry expedition to explore the Rocky Mountains through scientific research, artistic expression, and technical rock climbing. The program is designed for diverse youth 16-18 years old identifying as girls\*(cis/trans) or nonbinary or gender non-conforming youth from backgrounds that are historically underrepresented in the Geosciences (e.g., Black, Indigenous, and People of Color (BIPOC), low-income).

The program provides 9 participants, who have faced barriers to access to the outdoors, the opportunity to participate in a 12-day rock climbing and backcountry wilderness expedition, facilitated by 3 instructors. While in the field, participants design and conduct their own research projects. The expedition culminates in a public presentation of their research, open to all researchers and the public, which will allow for a festive celebration of the accomplishments.



**“I learned that science isn’t only in labs, labs can be anywhere you want them to be, the sky is not the limit, there’s no limit to curiosity”**

- Lupita, Girls\* on Rock participant, 2018

## GOR ACTIVITIES

**Rock Climbing:** Participants do not need to have previous experience in rock climbing, our instructors are trained and able to help with rock climbing. This activity is what sets GOR apart from other IGE.

**Backpacking & Hiking:** Instructors help gauge what hikes the group can complete. Gear Fairies are essential to this activity as they help get all food and equipment to the camping spot.

**Art & Science:** Participants take part in art and science lessons taught by instructors and guest experts. Through these lessons the group is provided the knowledge and skills to produce a hypothesis about something in the area they are staying in and complete a short-term research project.

**Community Building:** Community and inclusivity is the core of GOR. Participants live together, work on research projects together, and do fun activities together to create a community. Instructors work hard to facilitate team building, group development, and community.

## TIMELINE

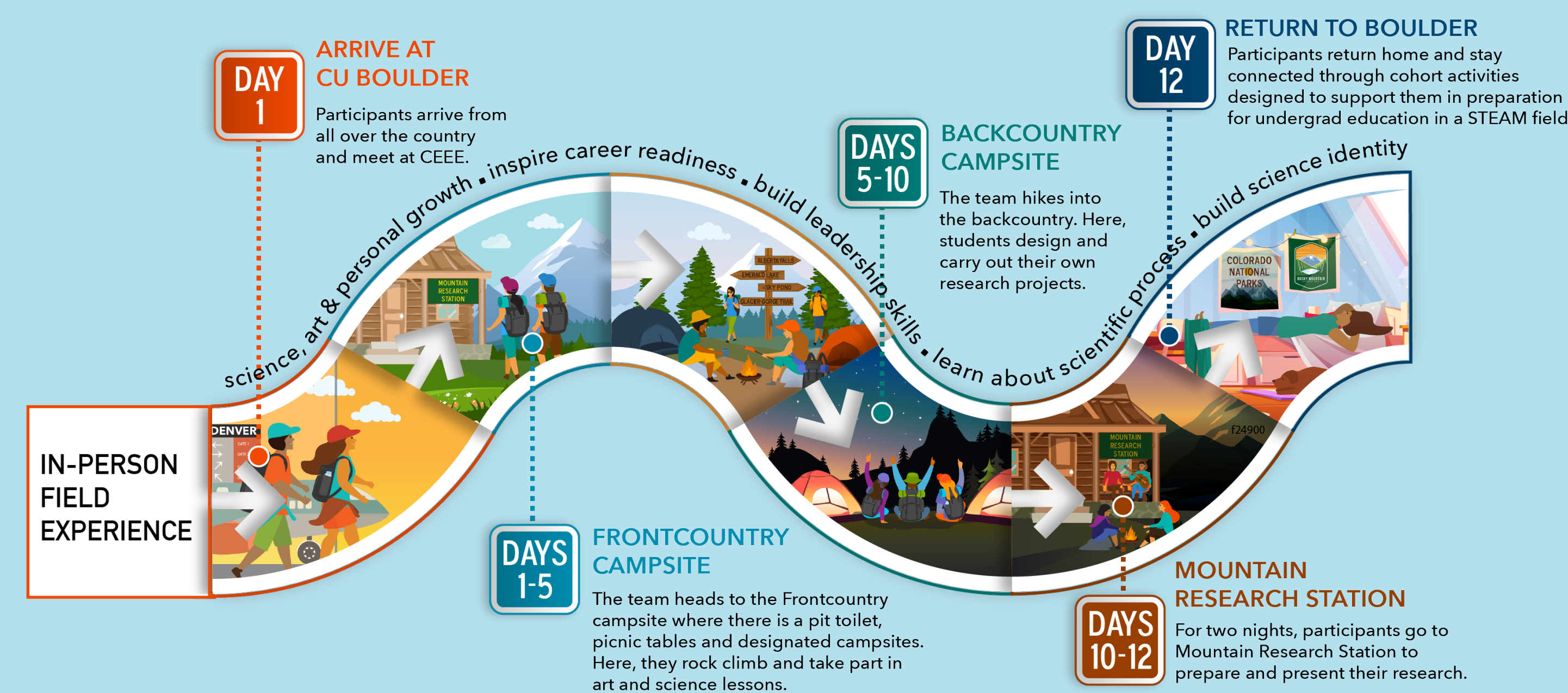


Figure 1: Graphic of program timeline

## WE NEED YOUR HELP!

Girls\* on Rock relies on volunteers to make the program possible. Here are some ways to get involved:

**Gear Fairies:** Gear Fairies help hike gear into and out of the back country with the team. Gear fairies can sign up to hike on **July 21** and/or **July 26**. The hike takes place near Breckenridge. Carpooling can be arranged.

**Packing Volunteers:** Packing volunteers help organize and pack supplies for the expedition. Packing volunteers should be available in **mid-July** to help with supplies. Packing takes place at CEEE.

**Research Presentation Attendee:** Audience member volunteers attend the final presentations to support the participants. Presentations take place on **July 27** at the Mountain Research Station in Nederland. Carpooling can be arranged.



**“My experiences during my Girls\* on Rock expedition have helped me shape who I am as a scientist and artist as well as my path moving forward through the rest of my school and career.”**

- A.Choi, Girls\* on Rock participant, 2021



Scan this QR code to be involved!

