



Looking back, looking ahead: The ELOKA program at 15+ years

Betsy Sheffield, Noor Johnson, Matthew Druckenmiller, Agnieszka Gautier, and Brendan Billingsley

<https://eloka-arctic.org>

In gratitude

ELOKA fosters **collaboration and learning** between resident Arctic experts and visiting researchers to facilitate the **collection, preservation, exchange, and use** of local observations and Indigenous Knowledge of the Arctic. We recognize that the Arctic is the homeland of many Indigenous Peoples, and we offer gratitude and respect for their longstanding stewardship of Arctic lands and waters. We acknowledge that Arctic science has been complicit in colonial practices that have undermined Indigenous Knowledge systems. We offer gratitude for the dedication of our community partners in working to preserve, protect, and contribute to Indigenous Knowledge for current and future generations.

Broad accomplishments

- Among the first programs to focus on data management with/for Indigenous communities
- Technical and social dimensions
- Changing definition of “data”
- Built a network of Indigenous partners from across the Arctic interested in community data management
- Co-created custom tools and products to manage community data
- Trained Indigenous interns, teachers, and others in community data management and use of tools
- Developed suite of core “services” including advising on data management, archiving, basic website development
- Based at NSIDC and utilizes and leverages its infrastructure and resources for data hosting, storage, software deployment and more

Next for ELOKA

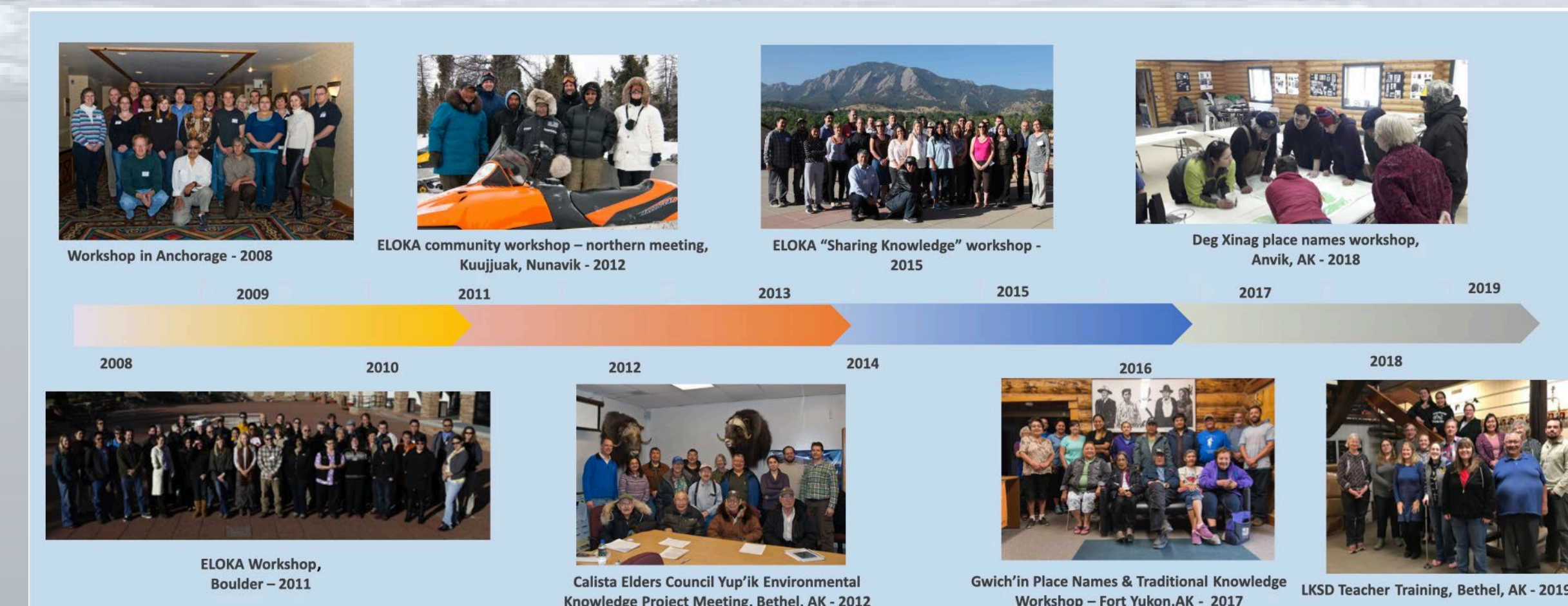
- Focusing on enhancing the use and usefulness of data management tools and applications
- Bringing different types of data into existing tools
- Co-developing and documenting data and tool use cases with partners
- Facilitating two working groups on Long-term Observations and Place Names
- Strong focus on data and knowledge sovereignty and increasing Indigenous leadership of ELOKA
- Incorporating learning and evaluation of co-production within ELOKA
- Expanding technical and software toolkit, including improvements to data packaging, export, and mobile integration considerations

Established in 2006, the Exchange for Local Observations and Knowledge of the Arctic (ELOKA) program has been engaging with Indigenous partners from across the Arctic interested in community data management. Through ELOKA’s unique focus on managing data with and for Indigenous communities, we developed approaches to archiving and distributing Indigenous data and knowledge, some of which require special protections including access and use limitations. A guiding principle is simple: tools and

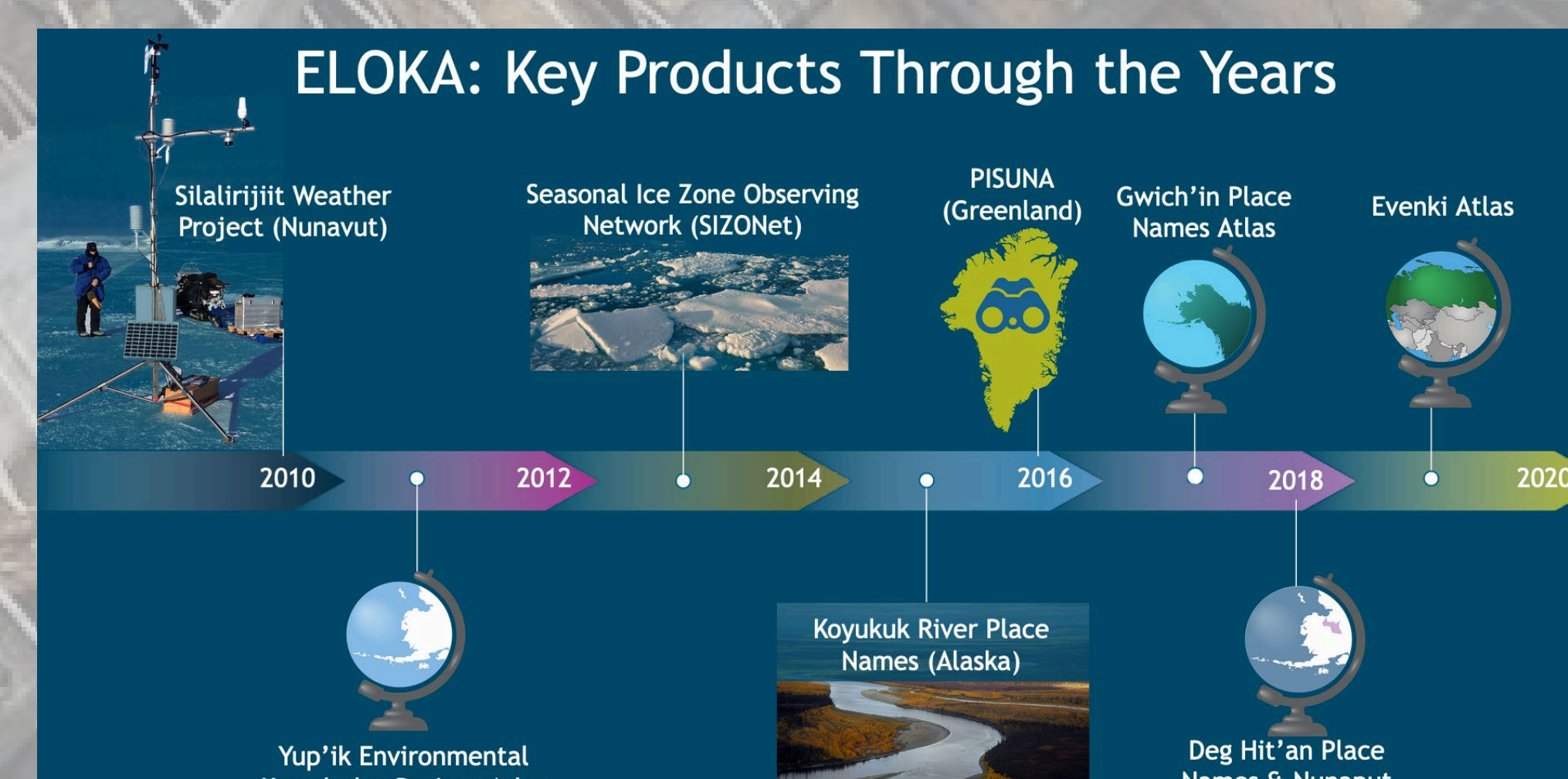
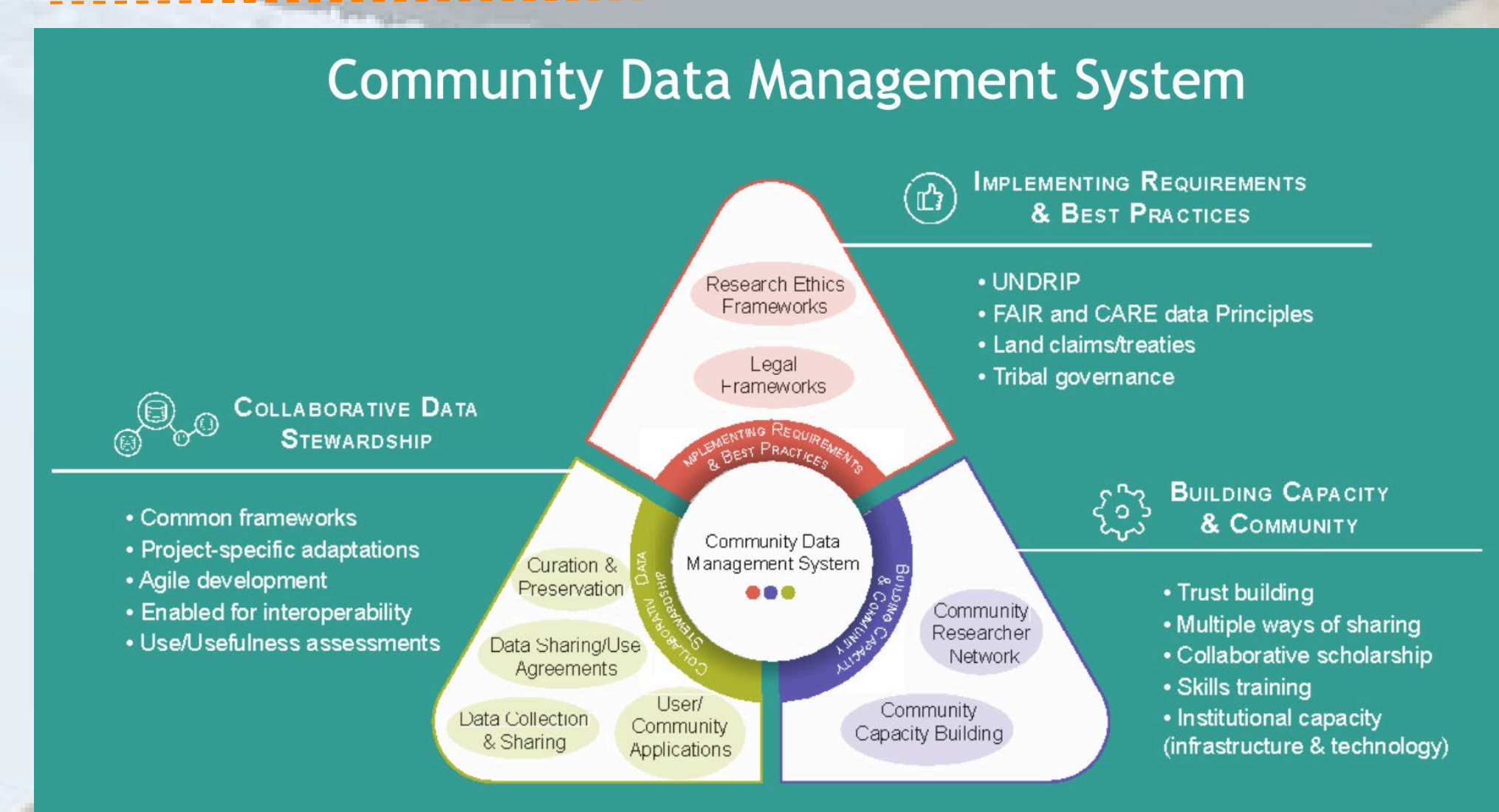
products are co-created with the knowledge providers, recognizing that the data are owned and stewarded by Indigenous communities. In 2021, ELOKA received a five-year NSF award to focus on the use and usefulness of data management tools and applications. Our work uses an asset-based approach to supporting community and Indigenous leadership for co-production of research and data management tools. An Indigenous advisory committee is overseeing ELOKA’s efforts.

Culturally-grounded and equitable approaches to engaging with communities

- Supporting equitable participation
- Centrality of relationships with people and place
- Acknowledging knowledge owners and land stewardship
- Goal of maintaining context & relationship for data
- Respecting and involving elders
- Significant focus on youth – school districts, interns
- Visiting, listening, sharing, getting community input
- Including cultural activities at meetings (song, dance, storytelling, traditional foods, recognition and gratitude)
- Translation and real-time interpretation of Indigenous languages (Inuktitut, Yup’ik, Kalaallisut)
- Compensation for participants
- Co-authorship and co-production – takes a huge amount of time!
- Relationships and agreements need to be maintained over time



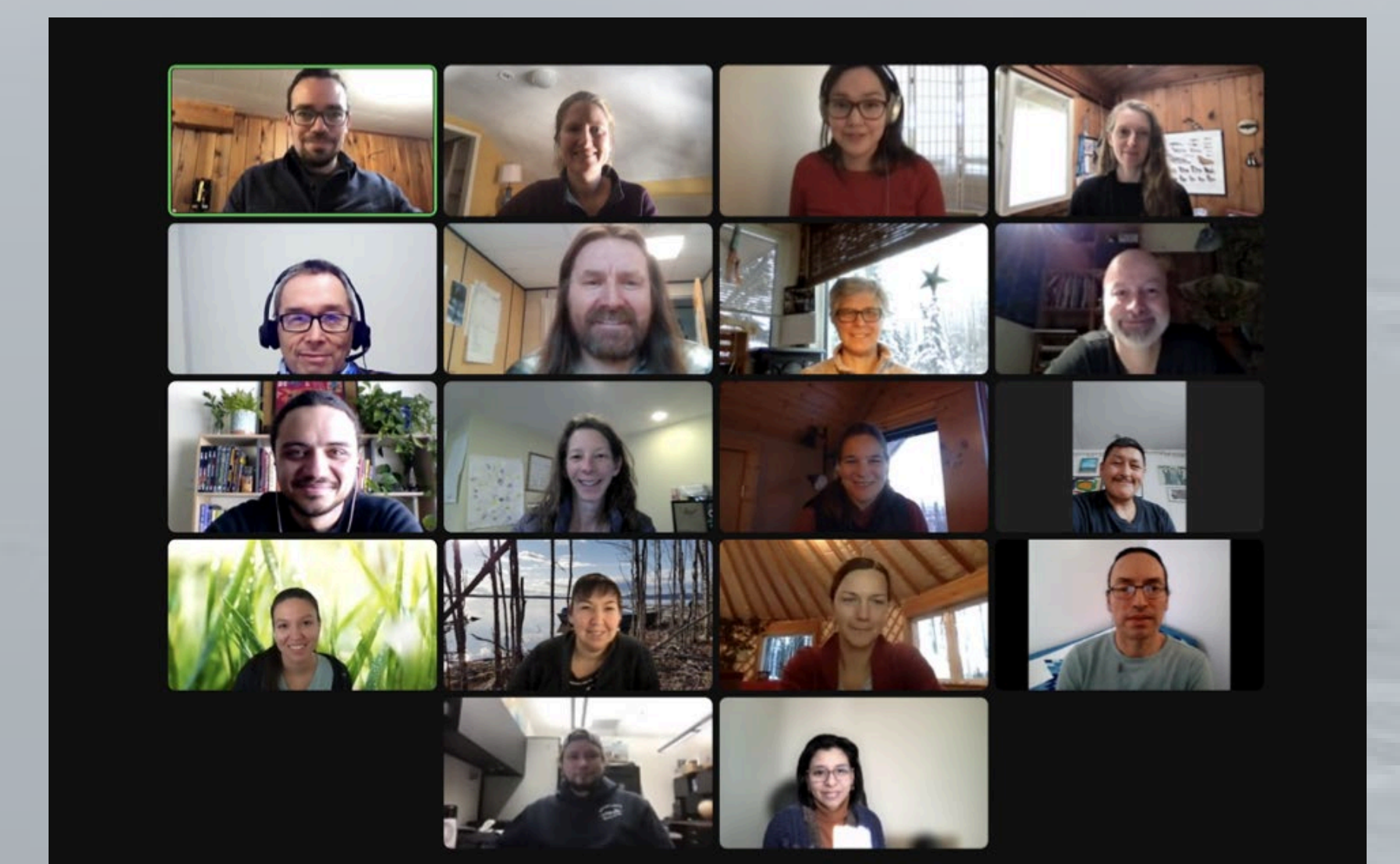
Data management and products



Products and partners

Websites & Data Distribution	Atlases	Custom Applications
<ul style="list-style-type: none">ELOKA WebsiteSea Ice in the Belcher IslandsBaffin Bay Region Narwhal Tusk ResearchSnowchange Oral History Project Siberia, RussiaYup’ik Environmental Knowledge ProjectBering Sea Sub-NetworkThe Northern Bering Sea: Our Way of LifeTraditional Knowledge Reports on Marine MammalsVoices from the Frontlines of a Changing Bering Sea	<ul style="list-style-type: none">Yup’ik Environmental Knowledge AtlasArcticCBM AtlasKoyukuk River AtlasSakha AtlasNunatsiavut AtlasITK Polar Bear AtlasNunaput (Chevak, Alaska)Gwich’in Place Names AtlasDeg Hit’an Dingan AtlasEvenki AtlasClyde River Atlas (support)	<ul style="list-style-type: none">Seasonal Ice Zone Observing Network (SIZONet – now AAOKH)Sililirijit (Clyde River Weather)PISUNA-Net (online database for the PISUNA community-based monitoring program in Greenland)Cillaput (weather station data application for Chevak and Kotlik, Alaska; developed in partnership with USGS)

Recent meeting of ELOKA’s Local Observations Working Group with partners from Alaska, Greenland, Canada, and Finland



ELOKA Advisory Committee



Clint Carroll (Cherokee), Associate Professor of Ethnic Studies, University of Colorado Boulder



Tatiana Degai (Itelman), Assistant Professor of Anthropology, University of Victoria, British Columbia



Kaare Sikuaq Erickson (Iñupiaq), Principal Consultant, Ikaagun Engagement



Mellisa “Maktuayaq” Johnson (Iñupiaq), Indigenous Communication and Engagement Specialist, IARPC