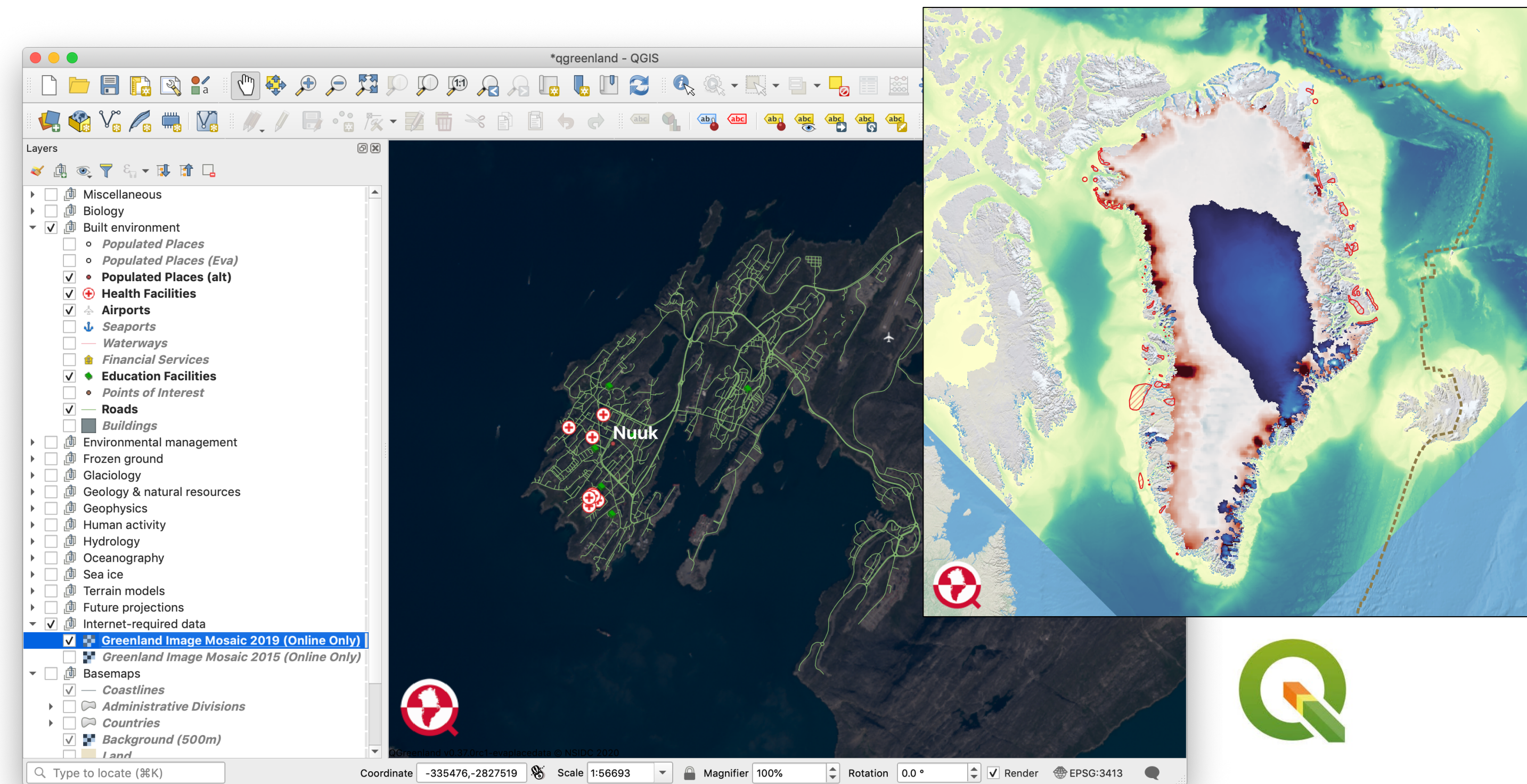




QGreenland: A GIS Research and Education Tool

QGreenland, an NSF EarthCube-funded project, is designed to remove barriers to exploration and teaching with Greenland-related geospatial data.

QGreenland provides an **all-in-one download package** of interdisciplinary data about Greenland, which a user can explore by opening a single project package within QGIS, a free GIS platform. Data provides local detail to ice-sheet-wide information.



Accompanied by a **complete User Guide** and detailed data information, **QGreenland supports many uses:** research planning, cross-disciplinary data discovery, creation of production quality maps and figures, teaching GIS skills, integrating independent Greenland data, offline in-field data viewing and analysis, and more.

QGreenland is a **community tool**. You can...

- **Explore v1.0!**
- **Signup** for the newsletter & **use** upcoming education material.
- **Share** QGreenland with your community.
- **Send ideas** for data & improvements.
- **Enhance** QGreenland with data and/or code contributions.
- **Leverage** QGreenland code for your own GIS project.

We are actively developing teaching material to bring QGreenland into the classroom. User workshops and further tutorial material will also continue to make QGreenland easy-to-use, even for those who are brand new to GIS software.

Use QGreenland as a **research tool**



Greenland-focused research begins

Download QGIS & QGreenland
*Add personal data/layers

Planning field work

Use to plan field travel and scout on-ice location

Arriving in Greenland

Use offline in the field for data and analysis

Advanced science research

Use QGIS along with Python/R/etc. to analyze new data

Research sharing

Use QGreenland layers to create meaningful figures for presentations and publications

Use QGreenland as an **education tool**



Install the tools

Download QGIS & QGreenland

Learn about Greenland

Explore ice, ocean, biology, communities, and much more

Learn about GIS

Learn how to navigate GIS software and data

Explore data analysis across data layers

Perform advanced analysis with built-in and add-on functions

Create custom visuals

Easily share work and findings through custom maps and flexible visualization options.

QGreenland.org

github.com/nsidc/qgreenland · qgreenland.info@gmail.com



Project Collaborations

De Nationale Geologiske Undersøgelser for Danmark og Grønland
Dansmarks Tekniske Universitet
Dansmarks Meteorologiske Institut
Norsk Polarinstitut

Arctic Data Committee
International Arctic Science Committee
WWF-Danmark
Pinngortitaleriffik
U.S. Polar Geospatial Center
Greenland Ecosystem Monitoring

Greenland Ice Sheet Ocean Science Network
N.S.F. Polar Computing RCN
Asiaq
Isaafik

CIRES Team

Twila Moon, Project Lead
Lynne Harden, Education Lead
Matt Fisher, Developer
Trey Stafford, Developer